

# Rad<sup>to</sup>RadLearning

*Focused tips from our experts*

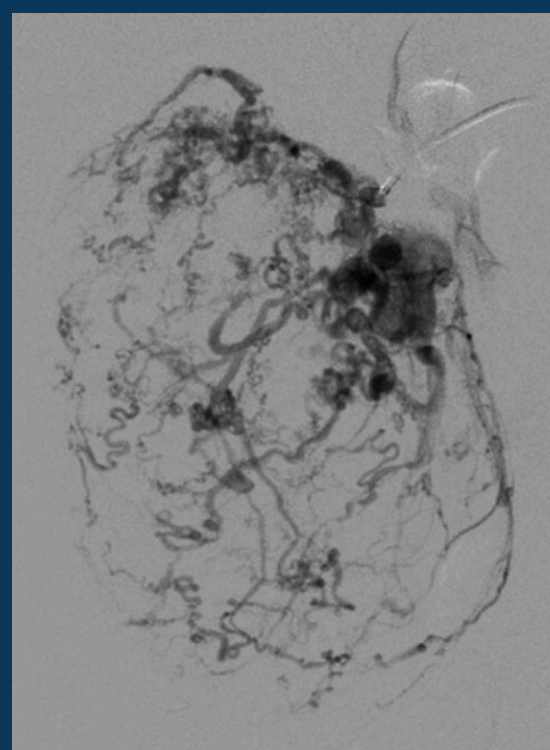
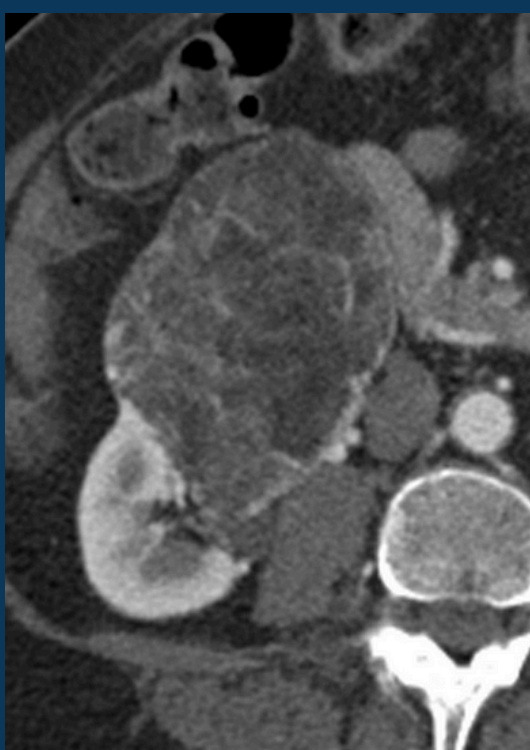
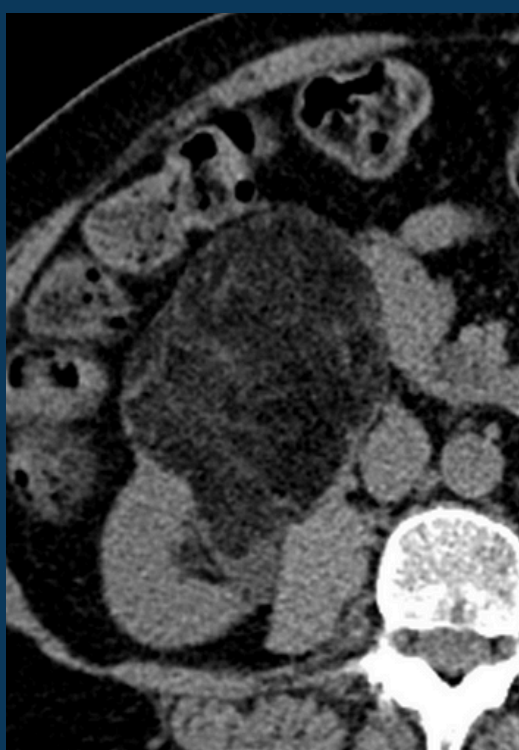
## Renal Angiomyolipoma

IR NATIONAL SUBSPECIALTY DIVISION



### PEER LEARNING OPPORTUNITY

An opportunity to establish a diagnosis and direct care using imaging alone.



*Macroscopic fat is the hallmark and confirms diagnosis.*



### PRACTICAL INSIGHTS

- Benign tumors, but they do grow over time.
- Abnormal vasculature with fragile and abnormal arteries often with small aneurysms.
- Lesions over 4cm in size carry an increased risk for spontaneous hemorrhage and warrant treatment.



*REFER AML  $\geq$ 3CM TO IR.*

## CLINICAL VALUE