

# Rad<sup>to</sup>RadLearning

*Focused tips from our experts*

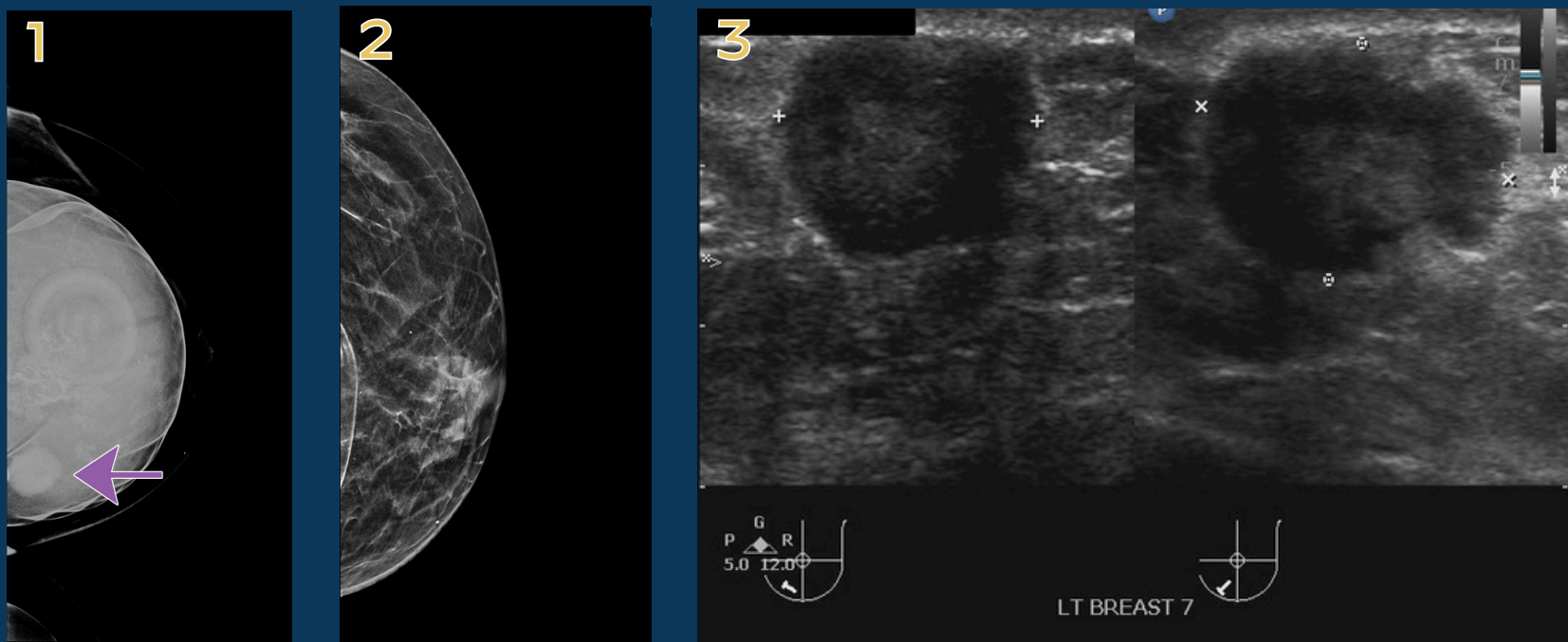
## Implant Obscured Mass

BREAST IMAGING NATIONAL SUBSPECIALTY DIVISION



### PEER LEARNING OPPORTUNITY

Implant-included views can be critical in diagnosing breast cancer.



- 1) Irregular mass seen through radiolucent saline implant.
- 2) ID view too anterior and excludes mass.
- 3) US + mass.



### PRACTICAL INSIGHTS

- Implants obscure breast tissue.
- Standard implant imaging includes implant-included and implant displaced (Eklund) views.
- Implant displaced (ID) views exclude posterior tissues.
- Saline implants are radiolucent.



**IMPLANT VIEWS ARE CRITICAL!**

## CLINICAL VALUE