

Rad^{to}RadLearning

Focused tips from our experts

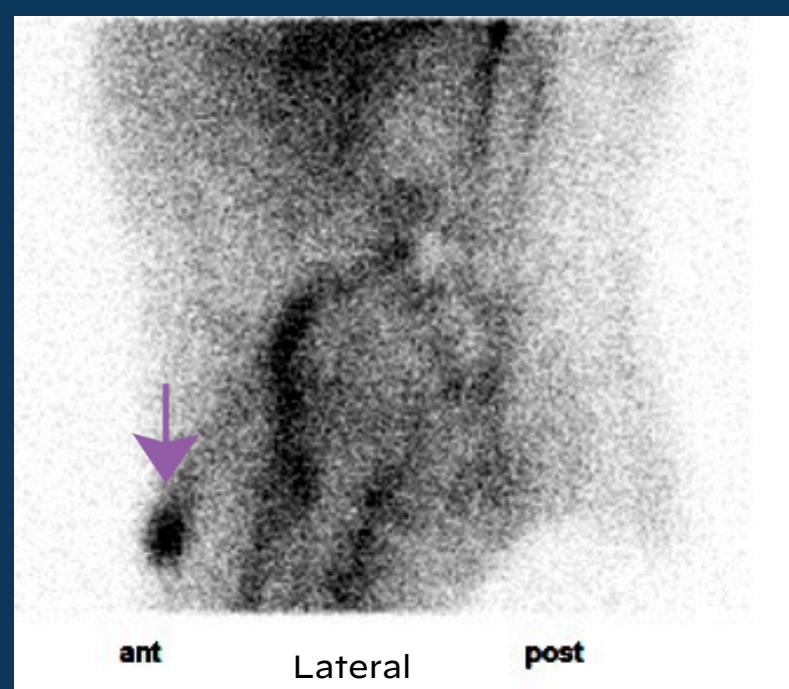
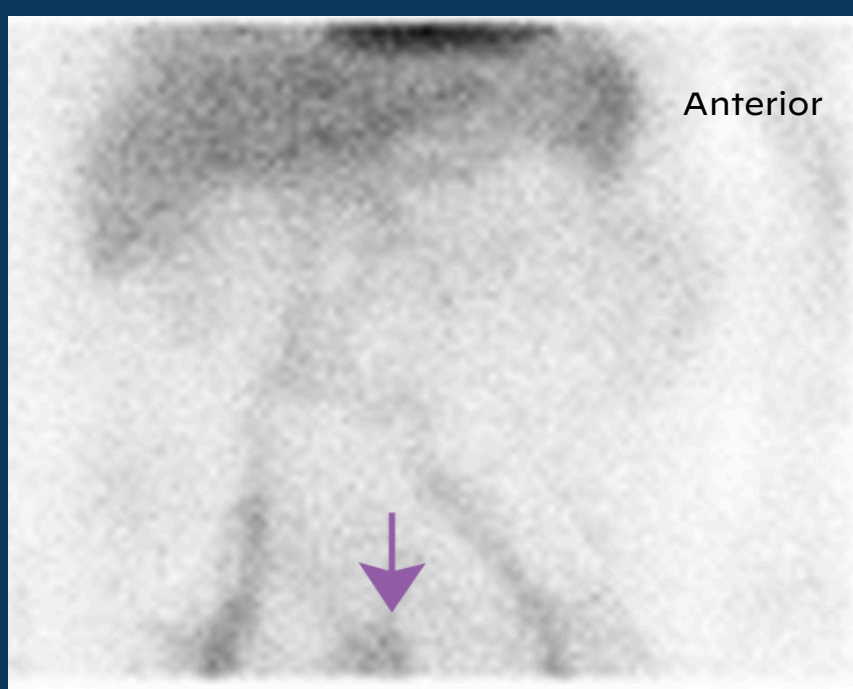
False Positive GI Bleed

NMMI NATIONAL SUBSPECIALTY DIVISION



PEER LEARNING OPPORTUNITY

Physiologic penile and scrotal activity may be confused for active GI bleed on anterior planar imaging.



*80-year-old man with bright red blood per rectum.
Anterior view with activity in the inferior midline pelvis.
Lateral view confirms activity in the penile/scrotal region.*



PRACTICAL INSIGHTS

- Active GI bleeds show increasing accumulation of radiotracer over time with either intraluminal antegrade or retrograde motion.
- Review dynamic images for improved assessment.
- Accumulation in the bladder is a useful marker for the lower pelvis.
- A lateral planar view differentiates anterior penile and scrotal activity from posterior rectal bleeding.



WHEN IN DOUBT, GET A LATERAL VIEW.



CLINICAL VALUE