

### What is a breast biopsy clip?

A tissue marker that is a very small metal object inserted into the breast at the time of a biopsy. There are a variety of different types of markers and your radiologist will use the marker clip most suitable for your procedure.

### Why do I need a biopsy clip inserted into my breast?

Biopsy clip placement is standard practice at the time of biopsy.

Marking the site with a clip helps to ensure the correct area was biopsied, and most importantly, the clip will be visible if further imaging or procedures are required in the future. If additional tissue is needed, placement of the biopsy clip ensures the surgeon will accurately target and remove the smallest amount of tissue possible.

### How long does the clip stay in after the biopsy?

If the biopsy is benign, the biopsy clip is safe and will remain in your breast. This prevents repeated biopsies of the same area on future mammograms. If biopsy demonstrates abnormal cells, surgery is usually required to remove the abnormality and the biopsy clip will also be removed.

### Are there any risks to having a biopsy clip placed?

There is a very small possibility of an allergic reaction when any foreign item is inserted into the body. If you have an allergy to metals such as nickel or titanium, please ensure you alert staff upon arrival for your procedure.

## Patient Handout

# Breast Biopsy Clip Placement:

## Commonly Asked Questions

 **CLINICAL VALUE**

*Innovate. Collaborate. Educate.*

## How is the clip inserted?

The clip is placed at the time of the biopsy after the samples are taken from the intended target. You will not feel placement of the clip as the site will be numb from the local anesthetic used during the procedure.

## What do the clips look like?

Clips are very small, about 3 mm or one tenth of an inch in size, like the size of sesame seed. A majority are made of titanium or stainless steel, and sometimes nickel-based alloy. There are multiple different types of shapes available.

## Can the clip move to other parts of my body?

No. The clip will remain in the breast, ideally at the site of biopsy. In rare cases, the clip may move or migrate slightly within your breast; however, it will not travel to other parts of the body.

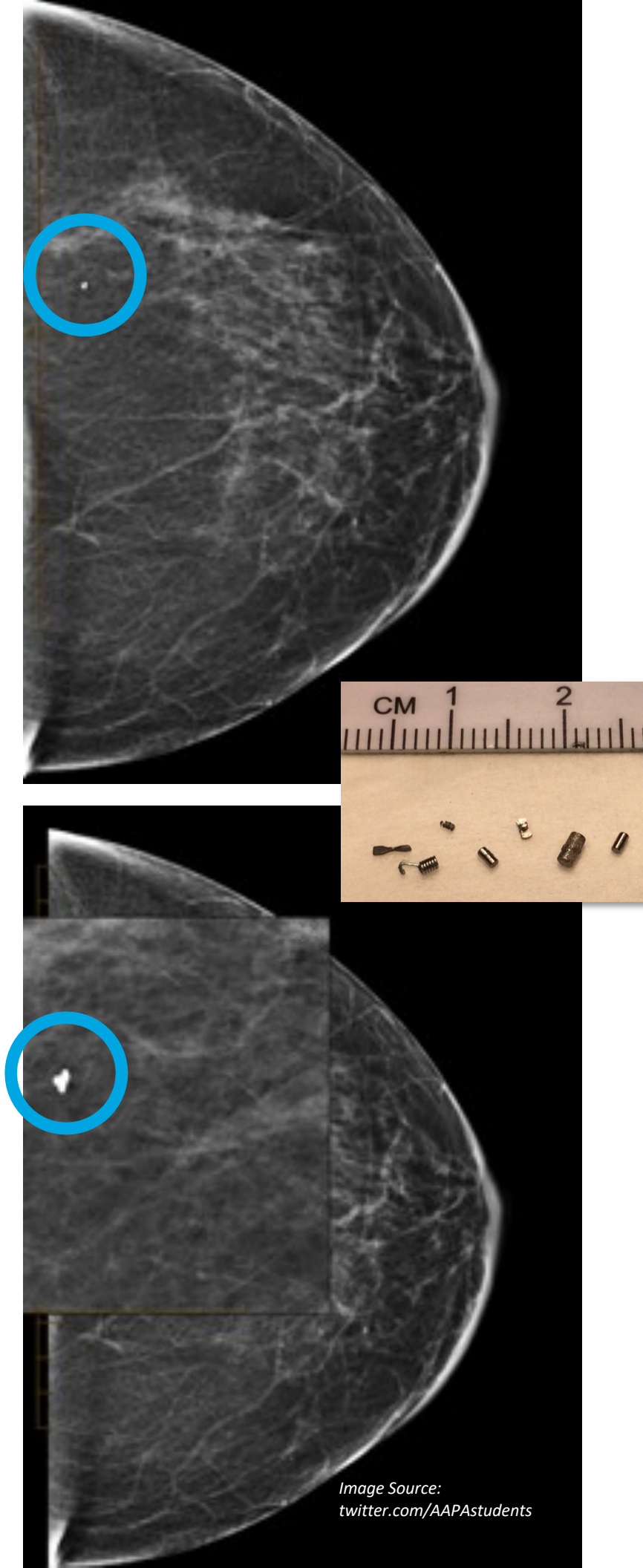


Image Source:  
[twitter.com/AAPastudents](https://twitter.com/AAPastudents)

## Can I get an MRI?

Yes. All breast biopsy clips are MRI compatible.

## Will I set off metal detectors or airport alarms?

No, the clips are not detectable.

## Will I feel the clip in my breast?

No, unless the clip is placed just below the skin, it will not be felt.

## Is this clip a tracking device?

No, the clips have no tracking capability.