

Rad^{to}Rad Learning

Focused tips from our experts

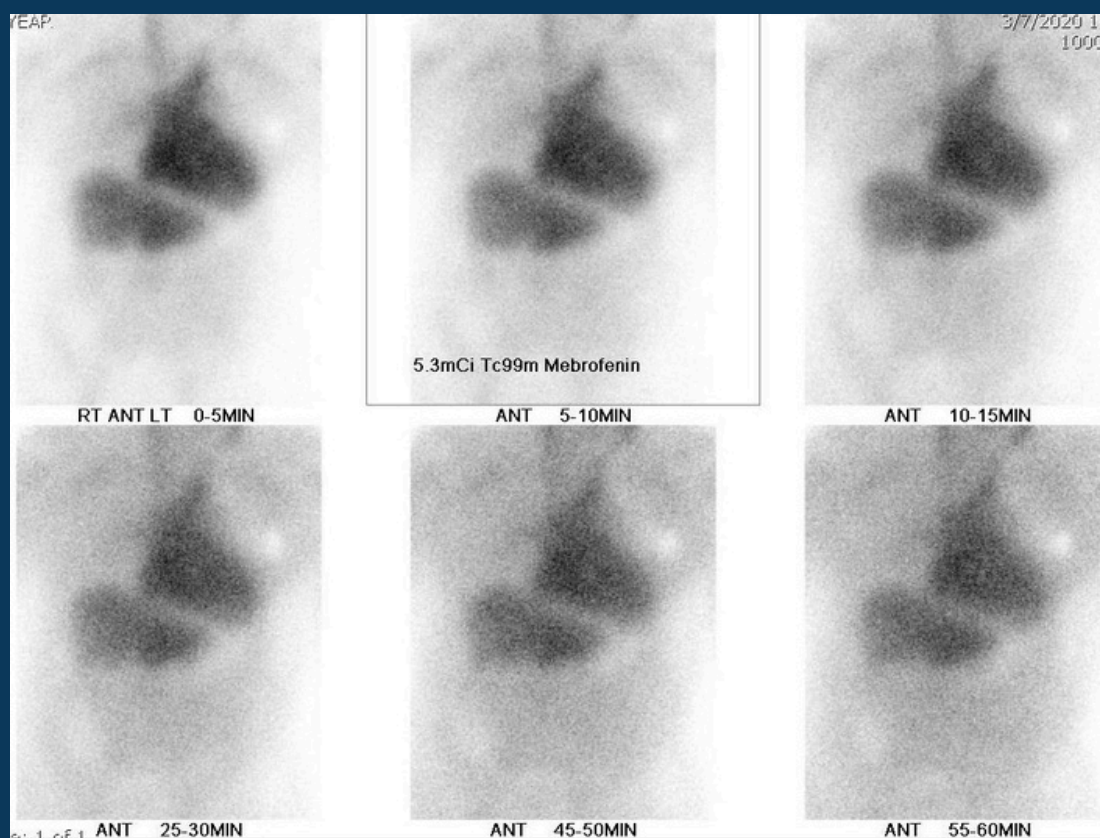
HIDA: Nonexcreting Liver

NMMI NATIONAL SUBSPECIALTY DIVISION



PEER LEARNING OPPORTUNITY

Nonexcreting liver on HIDA scan may be seen in biliary obstruction or severe liver disease.



Consider getting late delayed images (8 hours, next morning, etc.) in unclear cases.



PRACTICAL INSIGHTS

- Correlate with anatomic imaging and hepatic function tests.
- Delayed clearance of blood pool activity and renal excretion are associated findings.
- Morphine is not indicated.



NON-DIAGNOSTIC FOR ACUTE CHOLECYSTITIS

CLINICAL VALUE