

Rad^{to}RadLearning

Focused tips from our experts

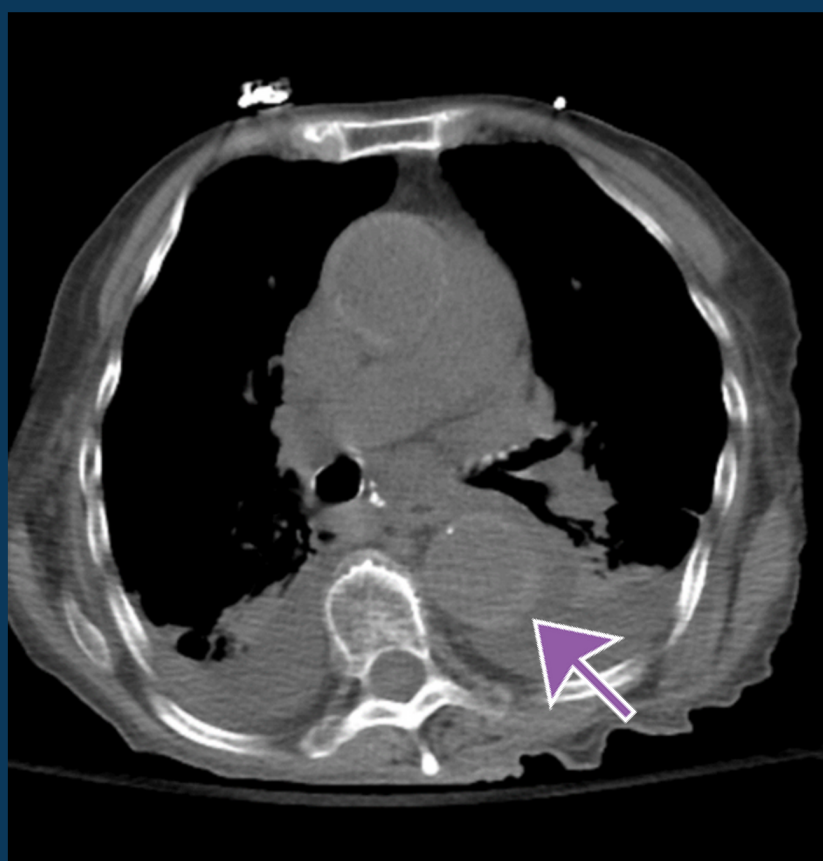
Intramural Hematoma

INTERVENTIONAL RADIOLOGY
NATIONAL SUBSPECIALTY DIVISION



PEER LEARNING OPPORTUNITY

Ascending aortic involvement is a critical finding, possible surgical emergency



Patient presenting with acute chest/back pain, finding of crescentic hyperdense aortic wall



PRACTICAL INSIGHTS

- Dissection equivalent
- Often occurs in hypertensive patients
- Mostly in the aorta or large vessel
- Extension into the ascending thoracic aorta = Urgency
- Most evidence seen on noncontrast images, consider adding noncontrast images to your protocol



VIEW NONCONTRAST IMAGES!

CLINICAL VALUE