

An Unfortunate Example of how the Pandemic has Delayed Care

October 2023

CLINICAL VALUE

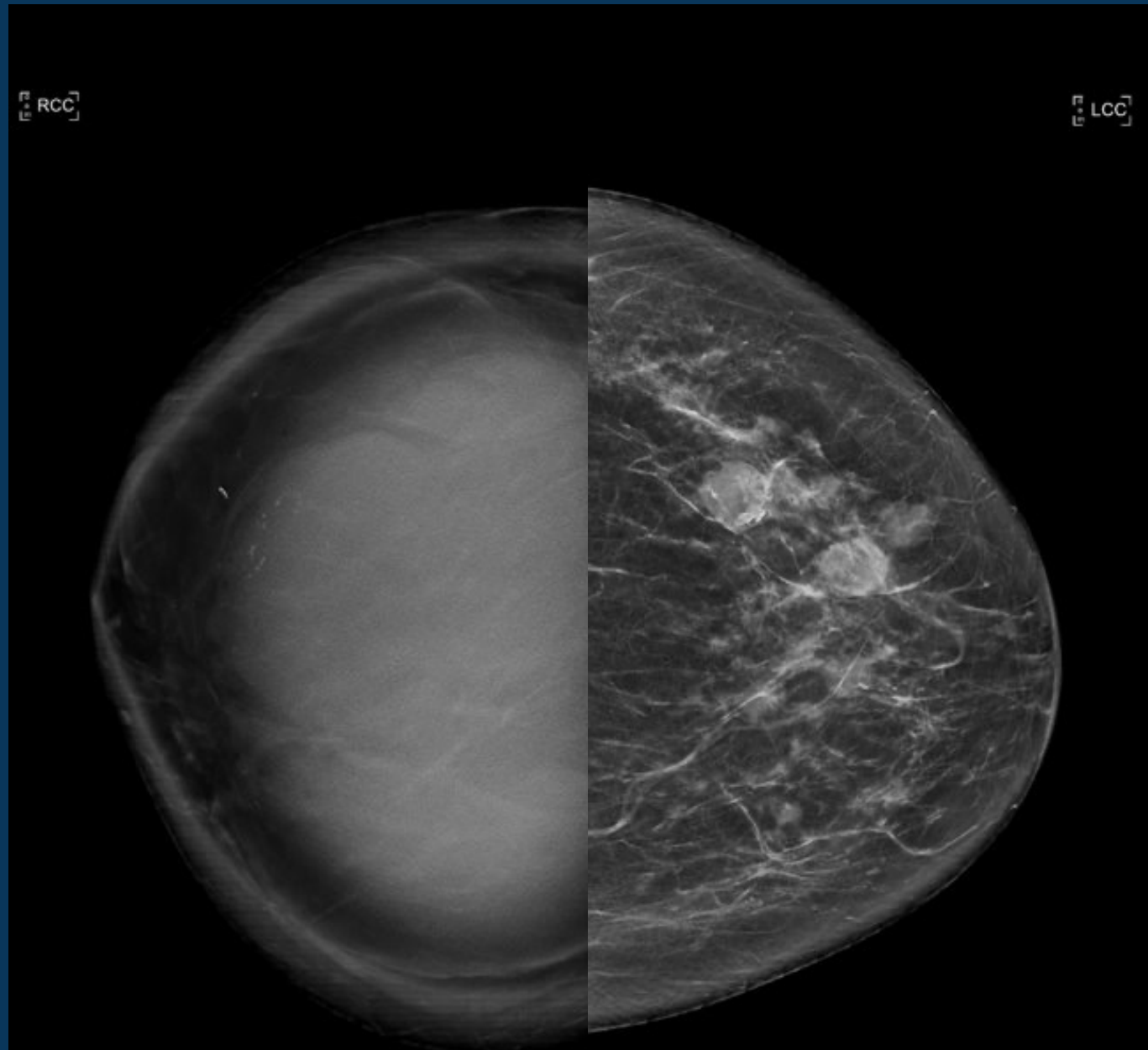
*Elevate patient care and enhance value through
innovation, collaboration and education*

 radiology partners®

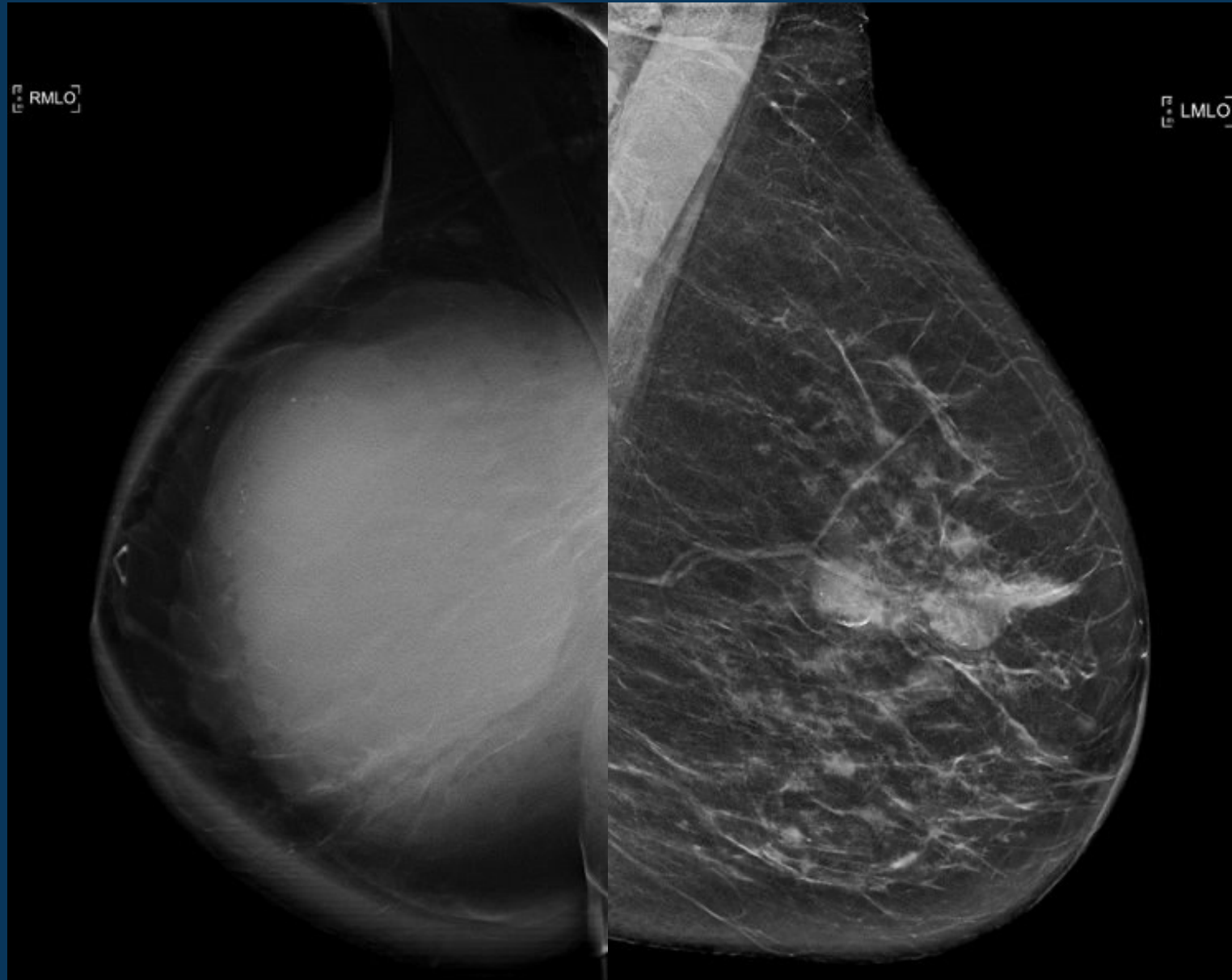
Clinical Info

- 53-year-old woman presents with a palpable right breast lump.
- She reports feeling it for 6 months and the lump is enlarging.
- Says she was afraid to seek medical attention due to Covid-19.

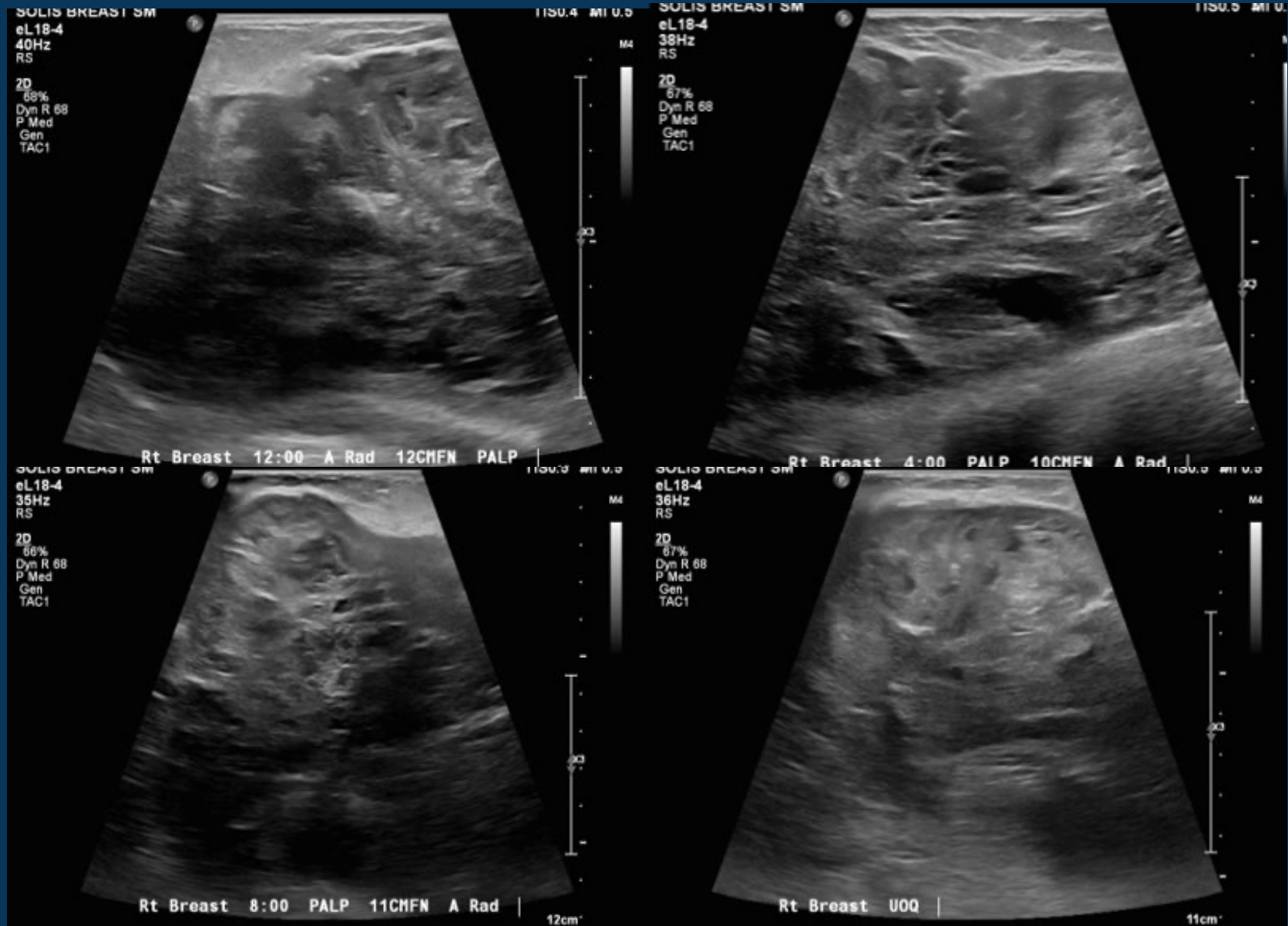
Imaging



Imaging



Imaging



Imaging



Diagnosis?



Malignant Phyllodes Tumor with Metastatic Adenopathy

- Phyllodes – Less than 1% of all breast neoplasms.
- Usually benign but can grow rapidly.
- Smaller lesions may be indistinguishable from fibroadenomata; hence we recommend excision of larger fibroepithelial lesions.
- Lymph node involvement is uncommon.
- Most often metastasize to the lungs.