



Rad to Rad Learning: Mode of Communication

The Radiology Partners (RP) Cardiothoracic Imaging National Subspecialty Division (NSD) presents our newest Rad to Rad Learning case.

Peer Learning Opportunity



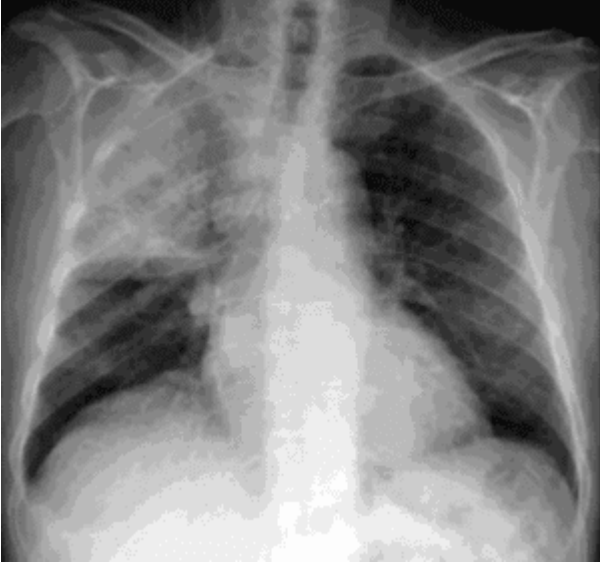
This is a routine outpatient chest x-ray that just showed up on your list at 4:45 pm on a Friday. What is the appropriate management?

Mode of Communication

Copyright 2025 Radiology Partners | All Rights Reserved. References to Radiology Partners includes its managed physician-owned and operated radiology practices which are licensed to practice medicine. Radiology Partners, Inc. is not licensed to practice medicine and does not provide patient care.

info@radpartners.com

 radiology partners®



Shared to improve patient safety and healthcare delivery in the provision of radiology services. The circumstances and facts are changed, altered, or deidentified to preserve confidentiality. Privileges have not been waived.

Practical Insights

- **Call the referring provider right away. Don't risk the report sitting in their inbox until Monday.**
 - **We're all familiar with critical findings that need to be communicated immediately like strokes or PEs, but it is also important to communicate more "routine" findings in a way that would prevent delays in treatment that could cause significant adverse outcomes.**
-

Takeaway: Consider potential treatment delays in how you choose to communicate your findings.

The Cardiovascular Imaging National Subspecialty Division (NSD) is part of [RP's Clinical Value Team](#), which works to elevate patient care and enhance value through innovation, collaboration and education. To advance this goal, our radiologists and advanced practice providers are committed to sharing peer learning as valuable reminders and insights about what we encounter in our day-to-day practice. Check back here and on [X](#), [LinkedIn](#) and [Instagram](#) to see these common cases and our findings.

Visit the [Clinical Resources page](#) for more cases and to see what we've developed to enhance best practice recommendations, elevate image quality and patient care and update current standards throughout RP's network of practices, all to deliver excellent radiology services to patients, referring clinicians and client partners.



[Radiology Partners](#), through its owned and affiliated practices, is a leading physician-led and physician-owned technology-enabled radiology practice in the U.S. For the latest news from RP, follow us on [X](#), [LinkedIn](#), [Instagram](#), [YouTube](#) and [the blog](#).





[Rad to Rad Learning: CT Left Atrial Appendage Occluder Device Thrombosis & Leak](#)

The Radiology Partners (RP) Cardiothoracic Imaging National Subspecialty Division (NSD) presents two of our newest Rad to Rad Learning cases.

The Cardiothoracic Imaging NSD is part of [RP's Clinical Value Team](#), which works to elevate patient care and enhance value through innovation, collaboration and education. To advance this goal, our radiologists and advanced practice providers are committed to sharing peer learning as valuable reminders and insights about what we encounter in our day-to-day practice.

Check back here and on [X](#), [LinkedIn](#) and [Instagram](#) to see these common cases and our findings.

CT

Left Atrial Appendage Occluder Device Thrombosis

CARDIOTHORACIC IMAGING
NATIONAL SUBSPECIALTY
DIVISION

Rad **RadLearning**
Focused tips from our experts

 **CLINICAL VALUE**

Copyright 2025 Radiology Partners | All Rights Reserved. References to Radiology Partners includes its managed physician-owned and operated radiology practices which are licensed to practice medicine. Radiology Partners, Inc. is not licensed to practice medicine and does not provide patient care.

info@radpartners.com

 radiology partners®

Copyright 2025 Radiology Partners | All Rights Reserved. References to Radiology Partners includes its managed physician-owned and operated radiology practices which are licensed to practice medicine. Radiology Partners, Inc. is not licensed to practice medicine and does not provide patient care.

info@radpartners.com

 **radiology partners®**

Copyright 2025 Radiology Partners | All Rights Reserved. References to Radiology Partners includes its managed physician-owned and operated radiology practices which are licensed to practice medicine. Radiology Partners, Inc. is not licensed to practice medicine and does not provide patient care.

info@radpartners.com

 **radiology partners®**

Copyright 2025 Radiology Partners | All Rights Reserved. References to Radiology Partners includes its managed physician-owned and operated radiology practices which are licensed to practice medicine. Radiology Partners, Inc. is not licensed to practice medicine and does not provide patient care.

info@radpartners.com

 **radiology partners®**

CT

Left Atrial Appendage Occluder Device Leak

CARDIOTHORACIC IMAGING
NATIONAL SUBSPECIALTY
DIVISION

Rad to Rad Learning
Focused tips from our experts

 CLINICAL VALUE

Visit the

Copyright 2025 Radiology Partners | All Rights Reserved. References to Radiology Partners includes its managed physician-owned and operated radiology practices which are licensed to practice medicine. Radiology Partners, Inc. is not licensed to practice medicine and does not provide patient care.

info@radpartners.com

 radiology partners®

[Clinical Resources page](#) for more cases and to see what we've developed to enhance best practice recommendations, elevate image quality and patient care and update current standards throughout RP's network of practices, all to deliver excellent radiology services to patients, referring clinicians and client partners.

[Radiology Partners](#), through its owned and affiliated practices, is a leading physician-led and physician-owned technology-enabled radiology practice in the U.S. For the latest news from RP, follow us on [X](#), [LinkedIn](#), [Instagram](#), [YouTube](#) and [the blog](#). Shared to improve patient safety and healthcare delivery in the provision of radiology services. The circumstances and facts are changed, altered, or deidentified to preserve confidentiality. Privileges have not been waived.



[Rad to Rad Learning: Intramural Hematoma of the Aorta](#)

The Radiology Partners (RP) Cardiothoracic Imaging National Subspecialty Division (NSD) presents our newest Rad to Rad Learning case.

The Cardiothoracic Imaging NSD is part of [RP's Clinical Value Team](#), which works to elevate patient care and enhance value through innovation, collaboration and education. To advance this goal, our radiologists and advanced practice providers are committed to sharing peer learning as valuable reminders and insights about what we encounter in our day-to-day practice.

Check back here and on [X](#), [LinkedIn](#) and [Instagram](#) to see these common cases and our findings.

Copyright 2025 Radiology Partners | All Rights Reserved. References to Radiology Partners includes its managed physician-owned and operated radiology practices which are licensed to practice medicine. Radiology Partners, Inc. is not licensed to practice medicine and does not provide patient care.

info@radpartners.com

 **radiology partners®**

Copyright 2025 Radiology Partners | All Rights Reserved. References to Radiology Partners includes its managed physician-owned and operated radiology practices which are licensed to practice medicine. Radiology Partners, Inc. is not licensed to practice medicine and does not provide patient care.

info@radpartners.com



Copyright 2025 Radiology Partners | All Rights Reserved. References to Radiology Partners includes its managed physician-owned and operated radiology practices which are licensed to practice medicine. Radiology Partners, Inc. is not licensed to practice medicine and does not provide patient care.

info@radpartners.com

 **radiology partners®**

CT

Intramural Hematoma of the Aorta

Rad **toRadLearning**
Focused tips from our experts

 **CLINICAL VALUE**

Visit the

Copyright 2025 Radiology Partners | All Rights Reserved. References to Radiology Partners includes its managed physician-owned and operated radiology practices which are licensed to practice medicine. Radiology Partners, Inc. is not licensed to practice medicine and does not provide patient care.

info@radpartners.com

 radiology partners®

[Clinical Resources page](#) for more cases and to see what we've developed to enhance best practice recommendations, elevate image quality and patient care and update current standards throughout RP's network of practices, all to deliver excellent radiology services to patients, referring clinicians and client partners.

[Radiology Partners](#), through its owned and affiliated practices, is a leading physician-led and physician-owned radiology practice in the U.S. For the latest news from RP, follow us on [X](#), [LinkedIn](#), [Instagram](#), [YouTube](#) and [the blog](#). Shared to improve patient safety and healthcare delivery in the provision of radiology services. The circumstances and facts are changed, altered, or deidentified to preserve confidentiality. Privileges have not been waived.