



## Rad to Rad Learning: Fat Embolism in Sickle Cell Crisis

The Radiology Partners (RP) Neuroradiology National Subspecialty Division (NSD) presents our newest Rad to Rad Learning case.

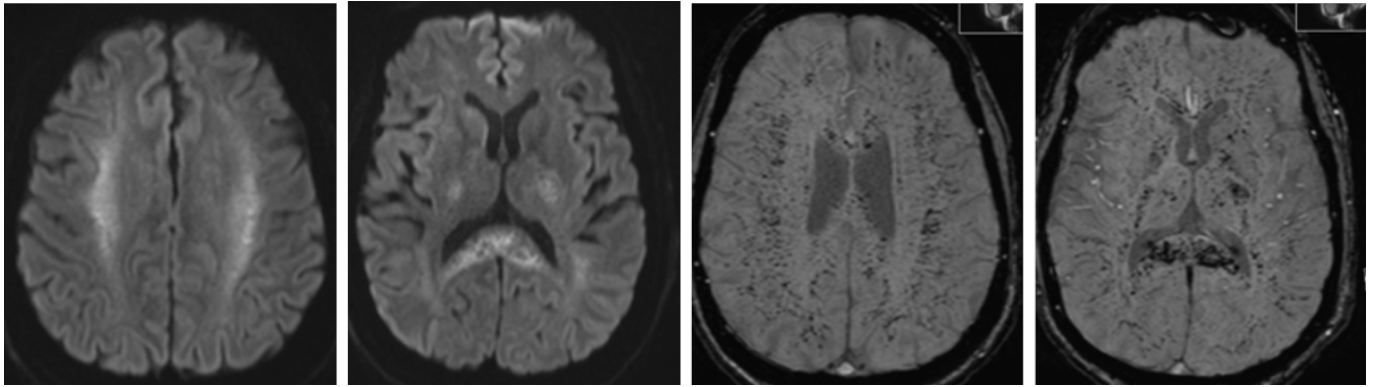
---

### Peer Learning Opportunity



Without typical MRI findings Cerebral Fat Embolism can be clinically misdiagnosed as a conventional large vessel stroke or seizure in SCD.

**Numerous confluent white matter microinfarcts (Starfield-pattern) and petechial microhemorrhages.**



Shared to improve patient safety and healthcare delivery in the provision of radiology services. The circumstances and facts are changed, altered, or deidentified to preserve confidentiality. Privileges have not been waived.

## Practical Insights

- **Occurs in <1% of Sickle Cell Disease (SCD)**
- **Fat globules released due to bone infarcts secondary to vaso-occlusion rather than fracture.**
- **History, distribution of lesions and white matter involvement differentiates from DAI and septic or cardiogenic emboli.**
- **90% of patients recover, but may develop atrophy.**



### **Takeaway: History and MR appearance are crucial for diagnosis.**

The Neuroradiology National Subspecialty Division (NSD) is part of [RP's Clinical Value Team](#), which works to elevate patient care and enhance value through innovation, collaboration and education. To advance this goal, our radiologists and advanced practice providers are committed to sharing peer learning as valuable reminders and insights about what we encounter in our day-to-day practice. Check back here and on [X](#), [LinkedIn](#) and [Instagram](#) to see these common cases and our findings.

Visit the [Clinical Resources page](#) for more cases and to see what we've developed to enhance best

practice recommendations, elevate image quality and patient care and update current standards throughout RP's network of practices, all to deliver excellent radiology services to patients, referring clinicians and client partners.



*[Radiology Partners](#), through its owned and affiliated practices, is a leading physician-led and physician-owned technology-enabled radiology practice in the U.S. For the latest news from RP, follow us on [X](#), [LinkedIn](#), [Instagram](#), [YouTube](#) and [the blog](#).*

Copyright 2025 Radiology Partners | All Rights Reserved. References to Radiology Partners includes its managed physician-owned and operated radiology practices which are licensed to practice medicine. Radiology Partners, Inc. is not licensed to practice medicine and does not provide patient care.

[info@radpartners.com](mailto:info@radpartners.com)

 radiology partners®