



# Rad to Rad Learning: Cavernous Sinus Hemangioma

**The Radiology Partners (RP) Neuroradiology National Subspecialty Division (NSD) presents our newest Rad to Rad Learning case.**

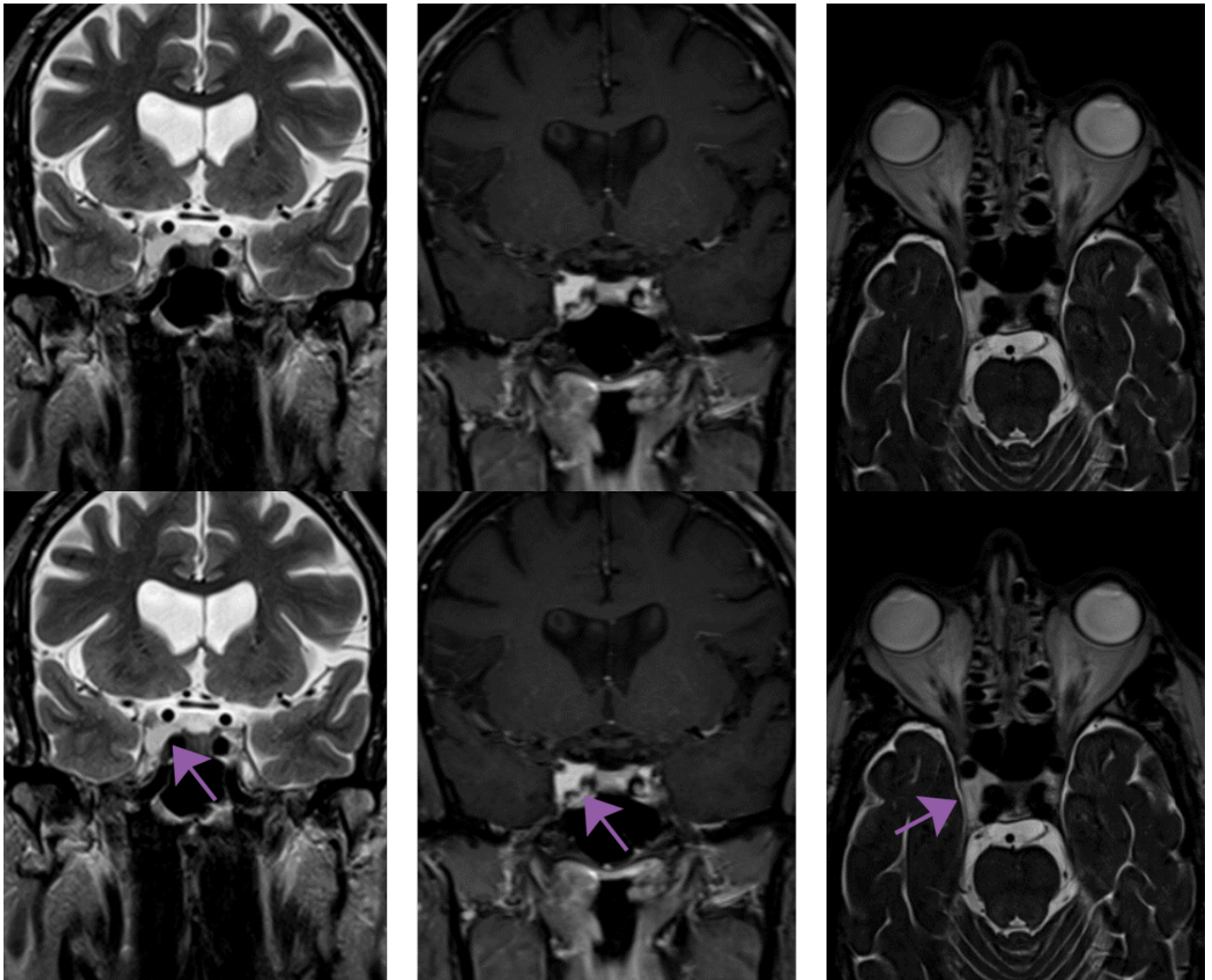
---

## **Peer Learning Opportunity**



**High risk of intraoperative hemorrhage with over 10% mortality rate if surgical removal is attempted.**

**Typical findings are well-defined, homogeneous, markedly T2 hyperintense, avidly enhancing cavernous sinus lesion.**



*Shared to improve patient safety and healthcare delivery in the provision of radiology services. The circumstances and facts are changed, altered, or deidentified to preserve confidentiality. Privileges have not been waived.*



- **Marked T2 hyperintensity, vascular encasement, progressive “filling-in”, vascular blush, or the absence of hyperostosis, vascular narrowing, or connection to the pituitary gland differentiates it from meningioma, adenoma, schwannoma, or metastasis.**



**Takeaway: : Pre-treatment diagnosis is critical since lesion is radiosensitive, but surgically challenging.**

The Neuroradiology National Subspecialty Division (NSD) ) is part of [RP’s Clinical Value Team](#), which works to elevate patient care and enhance value through innovation, collaboration and education. To advance this goal, our radiologists and advanced practice providers are committed to sharing peer learning as valuable reminders and insights about what we encounter in our day-to-day practice. Check back here and on [X](#), [LinkedIn](#) and [Instagram](#) to see these common cases and our findings.

Visit the [Clinical Resources page](#) for more cases and to see what we’ve developed to enhance best practice recommendations, elevate image quality and patient care and update current standards throughout RP’s network of practices, all to deliver excellent radiology services to patients, referring clinicians and client partners.



[Radiology Partners](#), through its owned and affiliated practices, is a leading physician-led and

physician-owned technology-enabled radiology practice in the U.S. For the latest news from RP, follow us on [X](#), [LinkedIn](#), [Instagram](#), [YouTube](#) and [the blog](#).

Copyright 2025 Radiology Partners | All Rights Reserved. References to Radiology Partners includes its managed physician-owned and operated radiology practices which are licensed to practice medicine. Radiology Partners, Inc. is not licensed to practice medicine and does not provide patient care.

**[info@radpartners.com](mailto:info@radpartners.com)**

 radiology partners®